

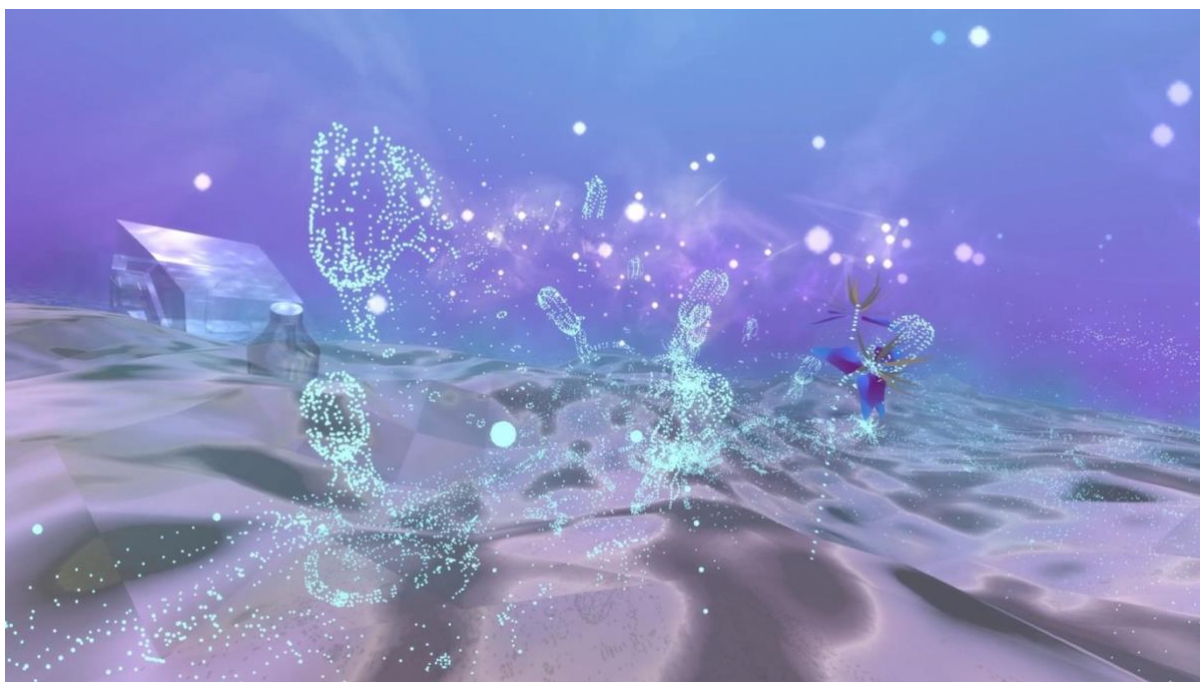
2022 KCC UK x Germany Open Call

Begin Again

Dates: 23 November 2022 – 4 February 2023

Opening reception: Tuesday, 22 November 2022, 6-8pm (RSVP essential)

Presented by the Korean Cultural Centre UK



7100AD: Air, 2022, VR experience, duration variable. Courtesy of the artist

The Korean Cultural Centre UK (KCCUK) presents a new exhibition 2022 KCC UK x Germany Open Call ***Begin Again***, opening on 23 November until 4 February at 1-3 Strand, London, featuring six international artists: Iden Sungyoung Kim, Kyungmin Sophia Son, Nina Nowak, Sooun Kim, Yambe Tam and Ya-Wen Fu.

To expand the opportunity of these talented emerging artists, the KCC Open Call has been designed to travel across two major cities, London and Berlin. Entitled *Begin Again*, the finalists of the 2022 KCC UK and Germany Open Call creatively reflect upon the notion of change and re-imagination. The title *Begin Again* means an attempt to look for change through uncertainty. The process of finding innovation in a chaotic situation is achieved through constant questioning.

The KCCUK's annual Open Call exhibition invites six artists selected by the following four jurors:

Alessio Antonioli (Director of Gasworks), Dr. Zoé Whitley (Director of Chisenhale Gallery) Dr. Andreas Beitin (Director of the Kunstmuseum Wolfsburg) and Dr. Sven Beckstette (Curator of Hamburger Bahnhof -Museum für Gegenwart – Berlin).

PARTICIPATING ARTISTS

Iden Sungyoung Kim, Kyungmin Sophia Son, Nina Nowak, Sooun Kim, Yambe Tum, Ya-Wen Fu

Six artists responded with various types of works in this group exhibition. First, Iden Sungyoung Kim aims to trigger a discussion on sociopolitical irony throughout history and critical reflection on current problems through her images and video works. Kyungmin Sophia Son elaborates on the status of 'becoming' within human and non-human relationships, traversing their expanded meaning within contemporary phenomena. Nina Nowak's series of large-scale silk screen prints are related to the speculative imprint of fiction, its impact on how we envision possible futures and how these narratives shape the world we are living in. Sooun Kim presents a video work using multivalent footage and audio influenced by traditional Korean music, contemporary electronic music, and rap to demonstrate the ways in which cultural imperialism, the long-term influence of the Korean War and the Japanese colonial era has influenced his generation. Inspired by bees from the biological point of view, Yambe Tam, uses VR (virtual reality), to help viewers become a bee in a virtual space and experience chemical signals. Lastly, Ya-wen Fu reproduces a part of the body and refers to the relationship between the body and the self. Does my body define me? Or does my ego control the body? She presents works that contain the artist's point of view on the duality of recognising the body.

PRESS CONTACT

Lee Suh, Curator, Korean Cultural Centre UK

E: lee.suh@kccuk.org.uk

T: +44 (0)20 7004 2602

IMAGES

Still images are available [here](#).

Relevant image captions can be found on the same link.

ABOUT THE KOREAN CULTURAL CENTRE

KCCUK is a leading institution devoted to promoting Korea's vibrant cultural scene to UK audiences. Holding exhibitions across the visual arts, dance, music and design fields, KCCUK also runs an education programme which seeks to develop knowledge of Korean heritage, history and culture. In recent years, KCCUK's visual arts department has worked in an increasingly collaborative way to present exhibitions in conjunction with other UK institutions such as Ikon, Whitechapel Gallery, Art Night London, fig-2 and the ICA. By acting as a platform for collaboration, KCCUK aims to exhibit and introduce pioneering Korean artists to regional and London-based audiences.

EXHIBITION DETAILS

Title	2022 KCC UK x Germany Open Call <i>Begin Again</i>
Date	23 November 2022 – 04 February 2023
Address	Korean Cultural Centre UK, Grand Buildings, 1-3 Strand, London WC2N 5BW (Entrance on Northumberland Avenue)
Telephone	+44 (0)20 7004 2600
Website	https://kccuk.org.uk/en/
Opening Hours	Monday – Friday, 10am – 5.30pm, Free Admission
Facebook	@kccuk
Instagram	@kccuk @kccuk_exhibition